



**2010-2011 Call for Nominations
CENTRAL MACKENZIE VALLEY**

Date of Launch: December 21 2010

**Closing at 4 P.M. (E.T.) on
February 1, 2011**



2010-2011 Call for Nominations CENTRAL MACKENZIE VALLEY

**Date of Launch: December 21, 2010
Closing date: February 1, 2011**

TABLE OF CONTENTS

1. Call for Nominations	1
<i>Map.....</i>	<i>2</i>
2. Content of Posting Requests	3
<i>Parcel Size.....</i>	<i>3</i>
3. Submission of Posting Requests.....	3
4. Priority of Posting	4
5. Resulting Call for Bids	4
Further Information and Contacts	5
 Annexes:	
Guidelines for Parcels North of Latitude 60° N ..	6
Posting Request Form.....	7



**2010-2011 CALL FOR NOMINATIONS
CENTRAL MACKENZIE VALLEY
Closing at 4 p.m. (E.T.) on February 1, 2011**

1. Call for Nominations

The Minister of Indian Affairs and Northern Development hereby calls for the submission of nominations for Frontier Lands, as defined in the *Canada Petroleum Resources Act*, located in the Central Mackenzie Valley of the Northwest Territories. A map is included.

Lands currently under licence which revert to Crown reserve status during the course of this Call for Nominations may also be posted. Please refer to our registry activities at www.ainc-inac.gc.ca/nth/og/rm/ra/mra/index-eng.asp. This site will list any changes to licences such as surrenders and terminations and is updated frequently.

Posting requests must be received by **February 1, 2011 at 4 p.m. E.T.**, to be considered by the Minister for inclusion in a Call for Bids (tentatively scheduled for February 2011) pursuant to Section 14 of the *Canada Petroleum Resources Act*.

The proposed 2010-2011 Call for Bids, Central Mackenzie Valley, form part of this Call for Nominations. The exercise of petroleum exploration rights may be subject to specific terms and conditions relating to the environment, and must comply with requirements under land claims and northern benefits. Further information can be found in section 17, Related Requirements, in the proposed 2010-2011 Call for Bids.

138°0'W 136°0'W 134°0'W 132°0'W 130°0'W 128°0'W 126°0'W 124°0'W



Indian and Northern Affairs Canada / Affaires indiennes et du Nord Canada

2010-2011

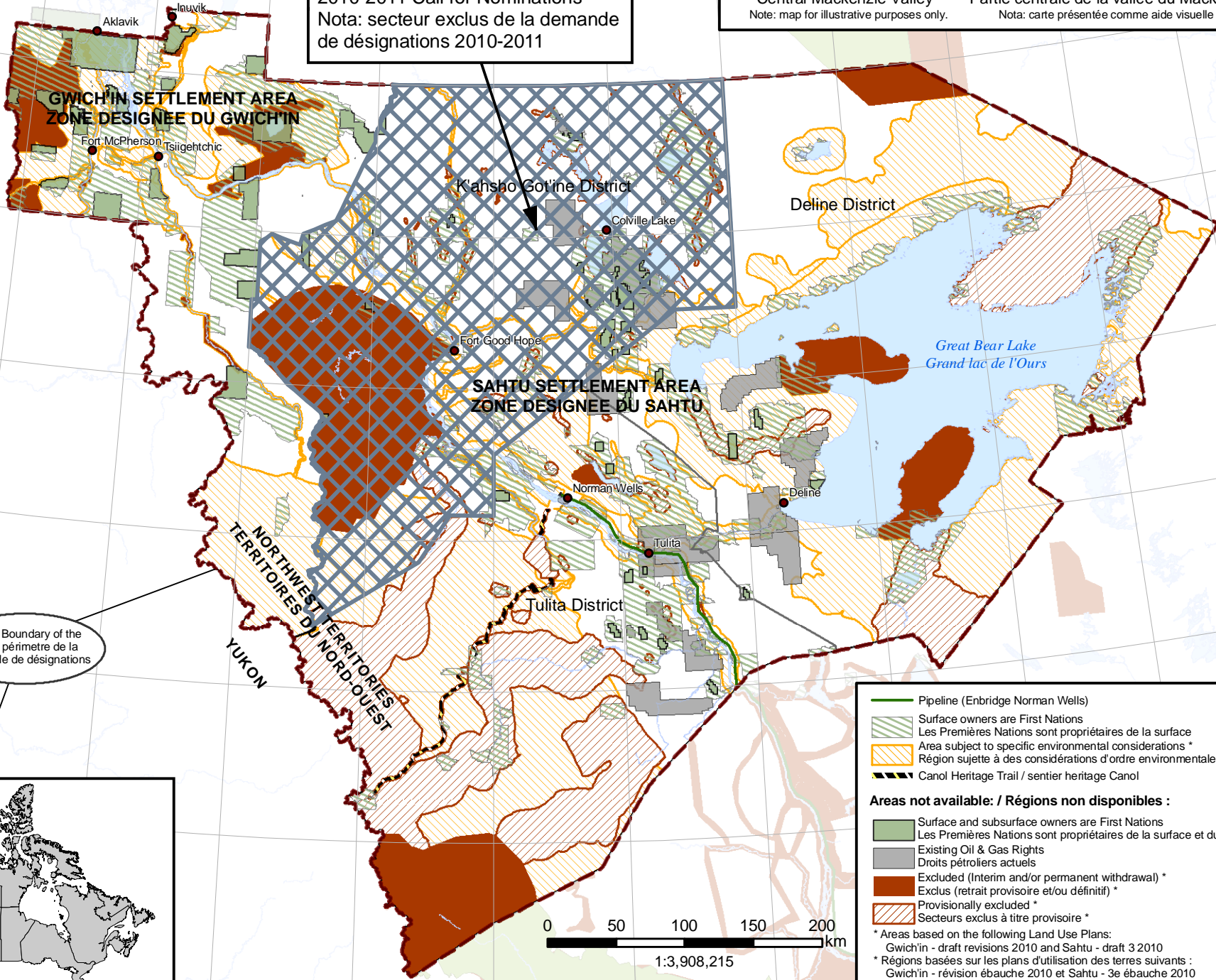
Northern Oil and Gas Branch
Call for Nominations
Central Mackenzie Valley
Note: map for illustrative purposes only.

Direction générale du pétrole et du gaz du Nord
Demande de désignations
Partie centrale de la vallée du Mackenzie
Nota: carte présentée comme aide visuelle seulement.

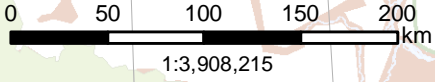
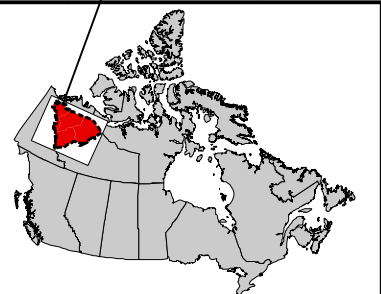
Note: Area excluded from the 2010-2011 Call for Nominations
Nota: secteur exclus de la demande de désignations 2010-2011

68°0'N
67°0'N
66°0'N
65°0'N
64°0'N
63°0'N
62°0'N

68°0'N
67°0'N
66°0'N
65°0'N
64°0'N
63°0'N
62°0'N



Outer Boundary of the Call / périmètre de la demande de désignations



Legend:

- Pipeline (Enbridge Norman Wells)
- Surface owners are First Nations / Les Premières Nations sont propriétaires de la surface
- Area subject to specific environmental considerations* / Région sujette à des considérations d'ordre environnementale*
- Canol Heritage Trail / sentier heritage Canol

Areas not available: / Régions non disponibles:

- Surface and subsurface owners are First Nations / Les Premières Nations sont propriétaires de la surface et du sous-sol
- Existing Oil & Gas Rights / Droits pétroliers actuels
- Excluded (Interim and/or permanent withdrawal)* / Exclus (retrait provisoire et/ou définitif)*
- Provisionally excluded* / Secteurs exclus à titre provisoire*

* Areas based on the following Land Use Plans:
Gwich'in - draft revisions 2010 and Sahtu - draft 3 2010
* Régions basées sur les plans d'utilisation des terres suivants:
Gwich'in - révision ébauche 2010 et Sahtu - 3e ébauche 2010

136°0'W 134°0'W 132°0'W 130°0'W 128°0'W 126°0'W 124°0'W 122°0'W 120°0'W OGM 2010-12



2. Content of Posting Requests

All posting requests must be described in accordance with the attached *Guidelines for Parcels North of Latitude 60° N*. Each tract posted shall comprise laterally or diagonally contiguous blocks.

Parcel Size

The minimum size of any posting is one (1) section; the maximum size is four (4) grids (320 sections).

A *Posting Request Form* is attached and should accompany the request.

In the Mackenzie Valley, subsurface selections made by Aboriginal groups pursuant to the land claim settlement agreements are excluded from the lands available for posting. The boundaries of parcels posted for lands that either abut or surround these subsurface selections may be described by simple exclusion. For example, a posting in the Sahtu settlement region could be described as: 66°00' N x 126°00' W, all sections excluding Sahtu-owned subsurface selection areas or 66°00' N x 126°00' W, all sections including those abutting Sahtu-owned subsurface selection areas. The final land descriptions for these parcels will be prepared in consultation with the requester.

Areas identified on the map as “excluded” and “provisionally excluded” are not included in the Call for Nominations.

3. Submission of Posting Requests

All requests must be submitted by fax no later than **February 1, 2011** at **4 p.m. E.T.** Each request should be addressed as follows:

Central Mackenzie Valley Call for Nominations
Closing date: February 1, 2011
Attention: Oil and Gas Management
Northern Oil and Gas Branch
FAX: (819) 953-5828

Requesters are advised to give prior notice of their intent to submit a fax by calling (819) 997-0048 or (819) 997-0877 immediately prior to transmission. Telephone confirmation will be provided, if requested, upon receipt of the fax. Only the fax copy is necessary; original copies are not required.

All submissions received will become property of the Crown and will not be returned.

All information concerning nominations will remain confidential.



4. Priority of Posting

Priority of posting will be determined by order of receipt. Time of receipt will be that recorded by the fax machine of the Northern Oil and Gas Branch in Gatineau.

In case of overlapping requests, the first to be received will have priority. The second requester will be informed of the area remaining in the request which does not overlap a prior nomination. The second requester will be required to state whether they would like to maintain their posting on the remaining lands or withdraw the request.

5. Resulting Call for Bids

The individual or company that requests the posting of a parcel(s) is expected to submit a bid(s) in an ensuing Call for Bids. Requesters are advised to examine the proposed Call for Bids for information concerning: terms and conditions of the proposed Call for Bids and terms and conditions of an Exploration Licence. The Minister reserves the right to refuse future posting requests from that individual or company if a bid is not submitted.

The Minister will take into account all nominations in developing a Call for Bids but may modify nominations to configure a bid block following consultation with the requester.

The Minister is not obliged to proceed with a Call for Bids for any lands posted.



Further Information and Contacts

For more information on this Call, the rights issuance process or the resource management regime, please contact:

Rights Administration
Oil and Gas Management Directorate
Northern Oil and Gas Branch
Department of Indian Affairs and Northern Development
OTTAWA ON K1A 0H4
Tel: (819) 997-0877; Fax: (819) 953-5828
E-mail: Rights@inac.gc.ca
www.ainc-inac.gc.ca/nth/og/

Any geological and well information with respect to the lands or area may be obtained from:

Data Coordinator
National Energy Board
Exploration and Production
444 Seventh Avenue SW
CALGARY AB T2P 0X8
Tel: (403) 292-4800; Fax: (403) 292-5876
www.neb-one.gc.ca



Guidelines for Parcels North of Latitude 60° N

These guidelines summarize the land description system for parcels north of latitude 60° N. For more detailed information see Section 4 of the *Canada Oil and Gas Land Regulations*. [Geographic coordinates are referenced to North American Datum 1927.]

Land areas are divided into grids, grids into sections, and sections into units.

Grids are bounded to the east and west by successive meridians of longitude:

- a) for lands south of latitude 70° N, the boundaries are spaced every 15' of longitude (e.g., 122° 00' W and 122° 15' W), or
- b) for lands north of latitude 70° N, they are spaced every 30' of longitude (e.g., 122° 00' W and 122° 30' W).

To the north and south, the boundaries of grids are defined by straight lines joining the points of intersection of their east and west boundaries with successive parallels of latitude spaced every 10' (e.g., 60° 00' N and 60° 10' N). Every grid area is referred to by the latitude and longitude co-ordinates of its northeast corner (e.g., 60° 10' N, 122° 00' W).

The number of sections into which a grid is divided depends on the latitude where the grid is located.

A section is bounded to the east and west by meridians:

- i) for lands between latitudes 70° and 75°, the boundaries are spaced at intervals of 1/10 of the distance between the east and west boundaries of the grid area, or
- ii) for lands between 60° and 68°, and between 75° and 78°, they are spaced at intervals of 1/8 of this distance, or
- iii) for lands between 68° and 70°, and between 78° and 85°, they are spaced at intervals of 1/6 of this distance.

Fig: 1 Sample grid with 80 sections

80	70	60	50	40	30	20	10
				39			
				38			
				37			
				36			
75	65	55	45	35	25	15	5
				34			
				33			
				32			
71	61	51	41	31	21	11	1

To the north and south, the boundaries of sections are defined by straight lines drawn parallel to the north and south boundaries of the grid and spaced at intervals of 1/10 of the distance between these boundaries.

Thus, grids have 100, 80 or 60 sections (10x10, 8x10, or 6x10) depending on their location.

The sections are numbered and each is referred to by its number (see Figure 1).

Every section is divided into 16 equal units, each of which is identified by a letter (see Figure 2).

Fig: 2 Units in a section

M	N	O	P
L	K	J	I
E	F	G	H
D	C	B	A



POSTING REQUEST FORM

Call for Nominations

This posting request is submitted in response to the

(Select one)

- Beaufort Sea & Mackenzie Delta
- Central Mackenzie Valley
- Arctic Islands of Nunavut

Call for Nominations closing on _____ .
(Insert closing date yyyy-mm-dd)

_____, on behalf of _____ ,
(Name of individual) *(Name of company)*

(Phone number / fax number / email)

requests that the following lands be posted in the next Call for Bids to be held for the area associated with the above-noted Call for Nominations.

Signed _____ on _____
(Signature) *(Date: yyyy-mm-dd)*

(Print name and title)

Land Description

Please attach the land description for nominated parcel(s) which include the grid latitude, longitude, section(s), number of sections per grid, and total number of sections as per the sample below.

Sample Land Description

Latitude	Longitude	Section(s)	# of Sections
69° 40'	133° 15'	9-10,19-20,30	5
69° 50'	133° 15'	1-4,11-12,21,31	8
Total number of sections:			13

Each parcel requested for posting must conform to the size limitations described in section 2 of the Call for Nominations.

Posting request forms must be submitted by fax to:

Oil and Gas Management
Northern Oil and Gas Branch
Indian and Northern Affairs Canada
Fax: (819) 953-5828